

STRAIN CAPTURE

Automatic stress detection system

➤ **100% Production monitored**

No production line downtime
Save time
Avoid waste

➤ **Real time feedback**

Drastically reduce any mistake

➤ **Improve glass production sustainability**

Keep temperature monitored and under control in real time



FLAT GLASS

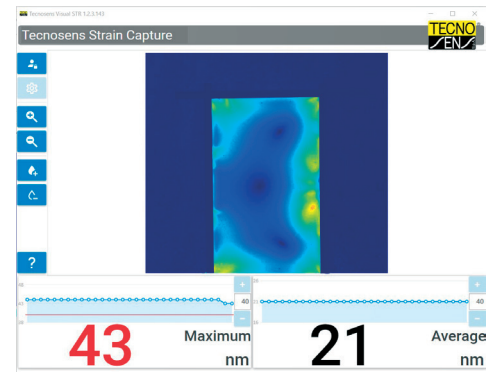
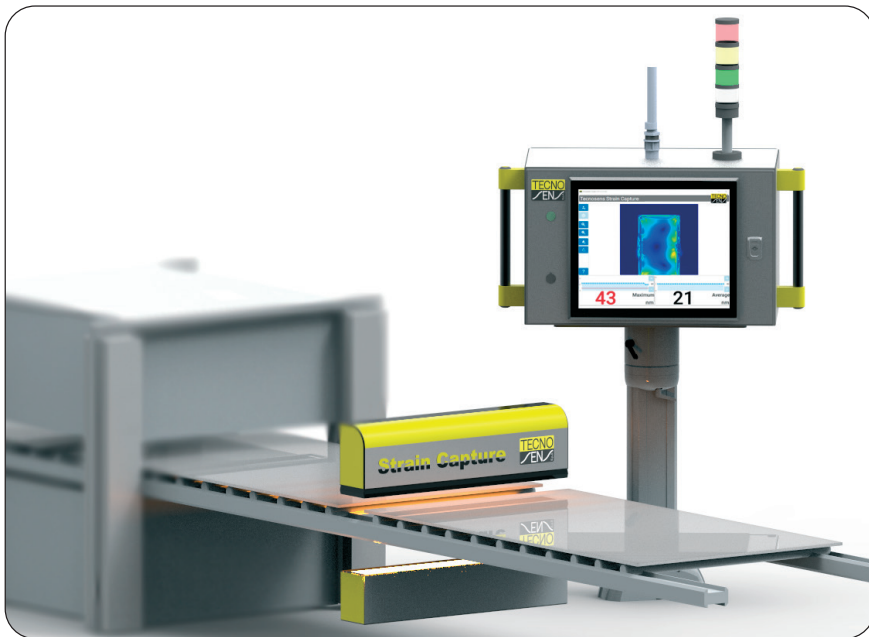
PHARMACEUTICAL GLASS

CONTAINER GLASS

PLASTIC FILMS

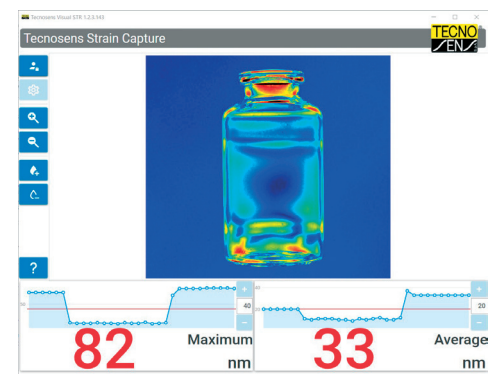
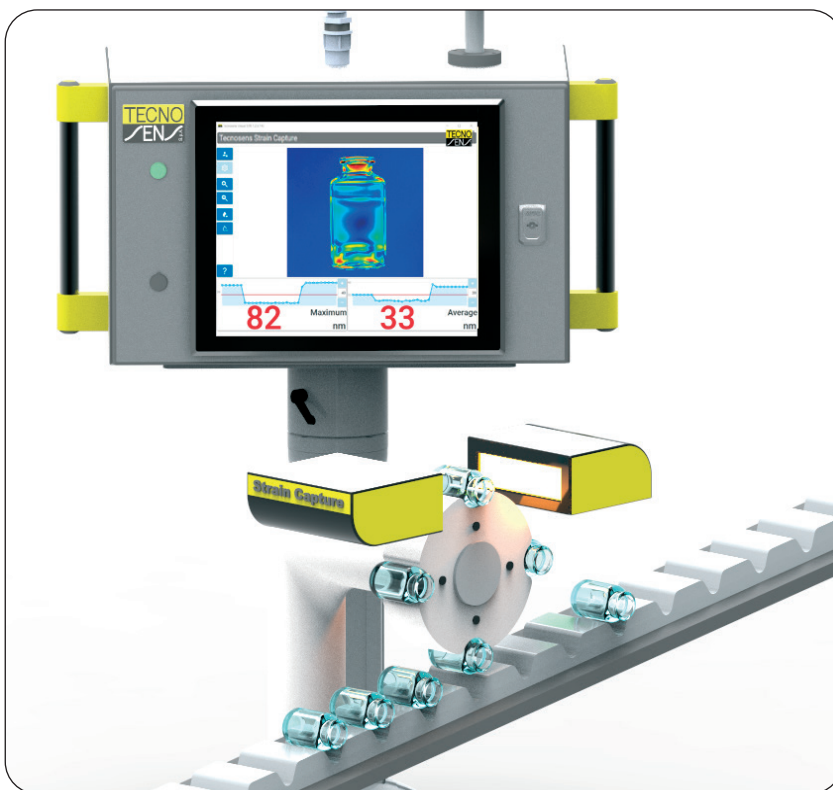


FLAT GLASS



Strain Capture allows to measure the stress distribution on flat glass. The distribution must be even so to avoid optical distortions and glass fragility

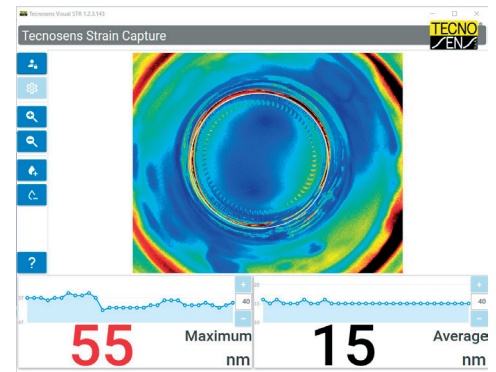
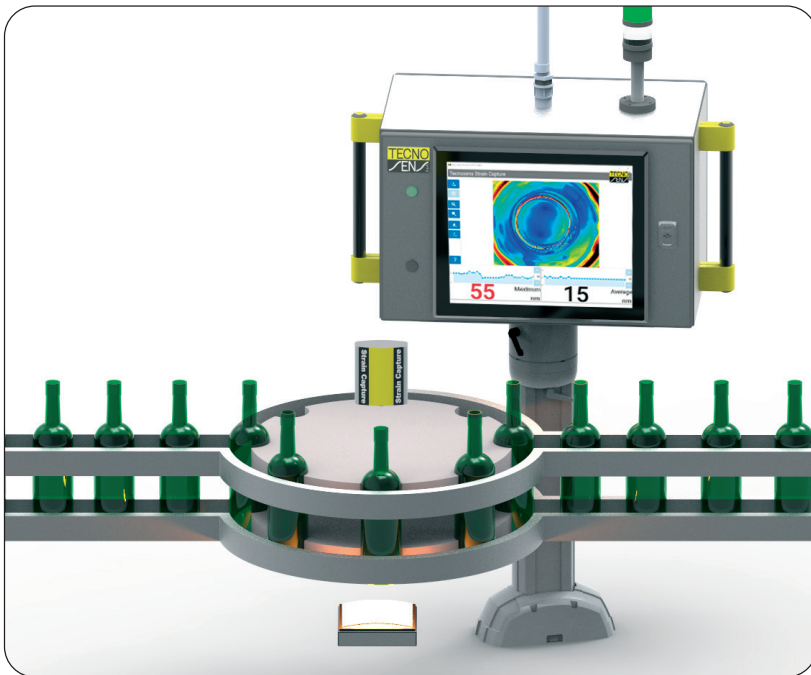
PHARMACEUTICAL GLASS



Measure annealing stress in order to avoid unwanted fragility of the container glass.

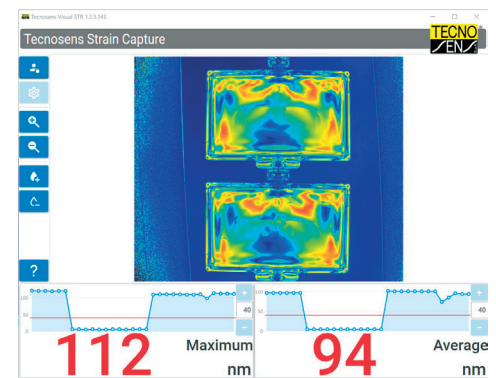
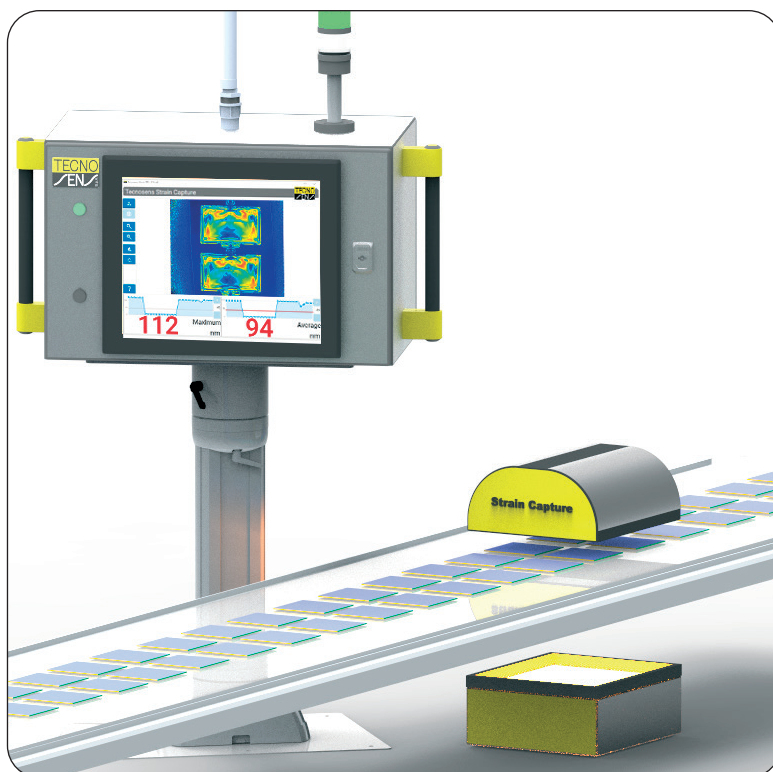
Strain Capture can measure ring and bottom stress in order to guarantee the strength of the packaging.

CONTAINER GLASS



Strain Capture can measure annealing stress on the bottom of the bottle, rejecting automatically pieces that are out of the required tolerance.


TECHNICAL FILMS AND PLASTICS



You can monitor the perfect distribution of the optical delay.

In this way it's possible to avoid optical distortions in transparent films used on digital displays, dashboards...

Technical data

Technology	Optical, non contact camera vision system
Working mode	In-line automatic selection of pieces within tolerance
Measurement frequency	Up to 20pcs per second
Processing	Controller with touchscreen industrial pc
Polarization	Circular
Light emission	LED matrix with a known wavelength
Resolution	Up to 5 Megapixel
Results	Optical delay (nm)
Measuring range	From 0 to +147 nm
Data output	Max stress in a ROI Avg stress in a ROI Color scale picture
Archive	Storage of pictures and measures for each piece; CSV report
Interface and communication protocol	Digital I/O, Ethernet, OPC Ua
Power supply	24 Vdc, 10A
Operating temperature	Controller 0°C to 50°C Sensors 0°C to 80° C
Extra features	-Temperature measurement -100% traceability -Statistics
Certification	

T e c n o s e n s :
Your global partner for sensing innovation



Find out more