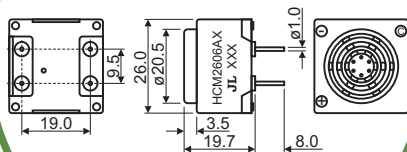


SoniCrest Electro-Magnetic Sound Generators

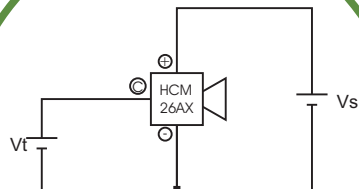
HCM26AX Series



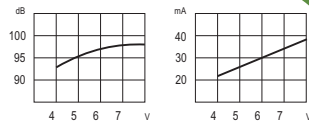
Dimension

Unit : mm
Tolerance : $\pm 0.3\text{mm}$

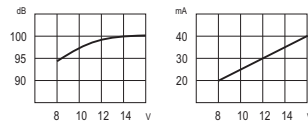
Coupled Circuit



HCM2606AX



HCM2612AX



Characteristics Response

Measuring Temperature : 25°C
Measuring Distance : 10cm

Specification (all data taken at 25°C unless otherwise specified)

| Model | Rated Voltage (VDC) | Operating Voltage (VDC) | ★Rated Current (mA) | ★Sound Output at 10cm (dB) | ★Generated Frequency (Hz) | Operating Temperature (°C) | Storage Temperature (°C) | Weight (g) |
|-----------|---------------------|-------------------------|---------------------|----------------------------|---------------------------|----------------------------|--------------------------|------------|
| HCM2606AX | 6 | 4 ~ 8 | ≤ 35 | ≥ 95 | 300 ~ 500 | -40 ~ +70 | -40 ~ +80 | 17 |
| HCM2612AX | 12 | 8 ~ 16 | ≤ 35 | ≥ 95 | 300 ~ 500 | -40 ~ +70 | -40 ~ +80 | 17 |

★ Value Applying Rated Voltage, DC