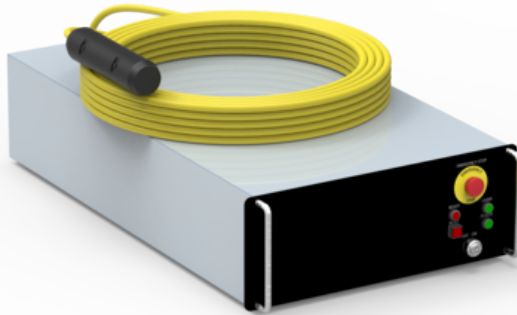


## FLC-2000S

**Product code:** FLC-2000S

**Manufacturer:** Fujikura Ltd.



The single mode continuous wave range is characterized by the reduced size of the laser beam, the very high power density and beam quality ( $M2 < 1.4$ ), allowing operations that cannot be achieved with multimode sources.

Applications in which single mode sources are typically used include:

- remote cutting (the quality of the beam allows high level of focusing)
- remote welding (the use of these sources allows the creation of very high quality welds, reducing the sputtering of molten metal)
- additive 3D processing (high power density allows controlled melting of metal powders used in additive printing)

<b>Beam Quality</b>	M2<1.4
<b>Dimension</b>	448 x 798 x 220
<b>Fiber length</b>	10 / 20 / 30 m
<b>Power</b>	2000W
<b>Cooling</b>	Water cooled