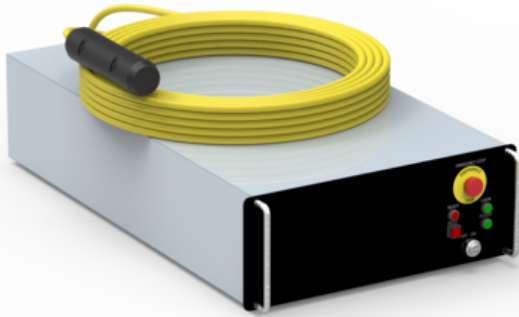


FLC-1000S

Product code: FLC-1000S

Manufacturer: Fujikura Ltd.



The single mode continuous wave range is characterized by the reduced size of the laser beam, the very high power density and beam quality ($M2 < 1.4$), allowing operations that cannot be achieved with multimode sources.

Applications in which single mode sources are typically used include:

- remote cutting (the quality of the beam allows high level of focusing)
- remote welding (the use of these sources allows the creation of very high quality welds, reducing the sputtering of molten metal)
- additive 3D processing (high power density allows controlled melting of metal powders used in additive printing)

Beam Quality	M2<1.4
Dimension	448 x 798 x 220
Fiber length	10 / 20 / 30 m
Power	1000W
Cooling	Water cooled