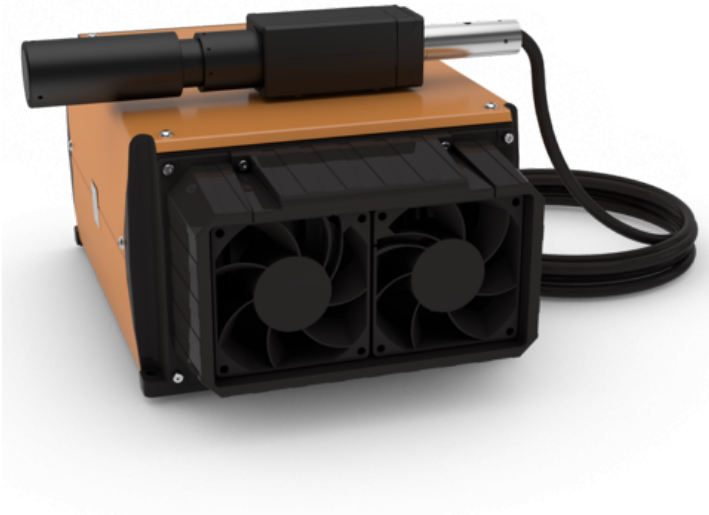


# FLP-G11-100

**Product code:** FLP-G11-100

**Manufacturer:** Fujikura Ltd.



Fujikura's pulsed fibre lasers 100W, with Q-Switch technology achieve an high beam quality and register high stability performance, even in the most difficult operating conditions.

Ideal for marking, deep engraving, steel plate cut and cleaning surfaces, pulsed fibre lasers allows reduced processing times, preserving the high quality of the product.

<b>Beam Quality</b>	< 2.2 (M2)
<b>Dimension (W x H x L)</b>	224 x 142 x 319 mm
<b>Pulse energy</b>	1.0 mJ
<b>Beam repetition frequency</b>	100 - 200 kHz
<b>Pulse width</b>	50 - 200 ns
<b>Wavelength (nm)</b>	1080 - 1095
<b>Function mode</b>	Q-Switched pulsed
<b>Power</b>	100W
<b>Cooling</b>	Air cooled
<b>Working temperature</b>	10° - 40°