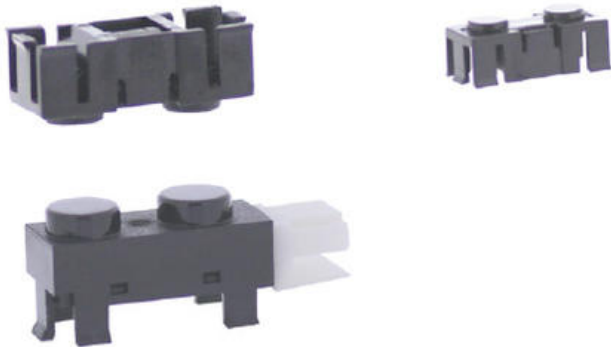


KP1430

Product code: KP1430

Manufacturer: Shinkoh electronics



Model KP1430 is a prism type photo sensor consisted of an Infra Red LED and a Photo transistor.

Feature:

- High resolution to object position.
- Available for detection of bill/dark paper.
- Distance between sensor and prism can be set.
- For application of dual beam sensor.

Application:

- Paper absence and Paper edge detection on Bill, Copying machine, Printer, and Facsimile.
- Object position detection.

Dust Proof	No
Gap	30mm
Mounting	Snap-in & Connector
Output	Analog output
Output Mode	Livello logico alto
Series	KP Series
Output type	Pull-up