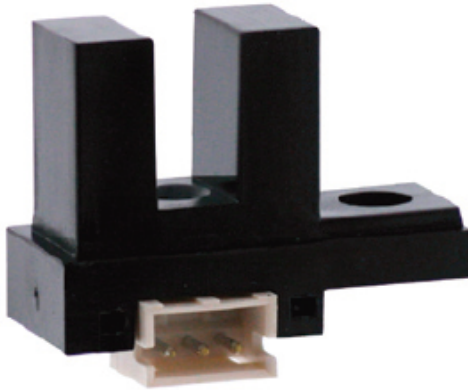


KI3860

Product code: KI3860

Manufacturer: Shinkoh electronics



Model KI3860 consists of an Infra Red LED and a high sensitive Photo transistor.

Feature:

- Visible light cut filter

Application:

- Object passing for card reader, Bill exchanger.
- Coin-passing for Auto vending machine an Amusement.
- Paper detection for O.A equipment.

Slot Width	4 mm
Mounting	Connector
Output	Analog output
Output Mode	Digital high level
Series	KI Series
Output type	Open collector