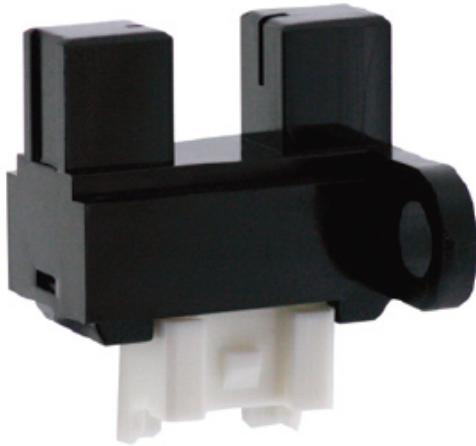


KI3760

Product code: KI3760

Manufacturer: Shinkoh electronics



Model KI3760 are compact size of photo interrupter and consist of an Infra Red LED and a Photo IC. an detector.

Feature:

- Built-in amplifier, open collector output type.
- Built in resistor for LED drive

Application:

- Object passing for card reader, Bill exchanger.
- Coin-passing for Auto vending machine an Amusement.
- Object passing in Auto vender and Tiket vending machine.
- Paper detection for O.A equipment.

Dust Proof	No
Slot Width	5 mm
Mounting	Connector
Output	Photo IC output
Output Mode	Digital high level
Series	KI Series