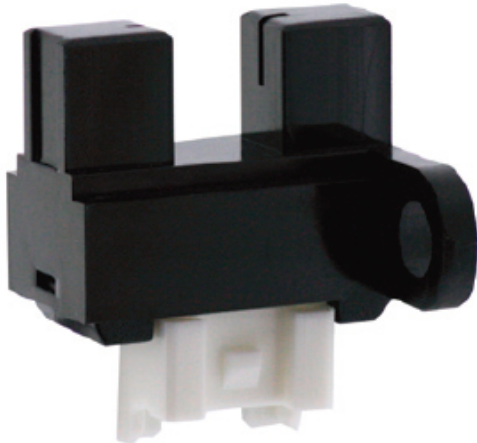


# KI3750

**Product code:** KI3750

**Manufacturer:** Shinkoh electronics



Model KI3750 are compact size of photo interrupter and consist of an Infra Red LED and a Photo IC. an detector.

Feature:

- Built-in amplifier, open collector output type.
- Built in resistor for LED drive

Application:

- Object passing for card reader, Bill exchanger.
- Coin-passing for Auto vending machine an Amusement.
- Object passing in Auto vender and Tiket vending machine.
- Paper detection for O.A equipment.

<b>Dust Proof</b>	No
<b>Slot Width</b>	5 mm
<b>Mounting</b>	Connector
<b>Output</b>	Photo IC output
<b>Output Mode</b>	Digital high level
<b>Series</b>	KI Series