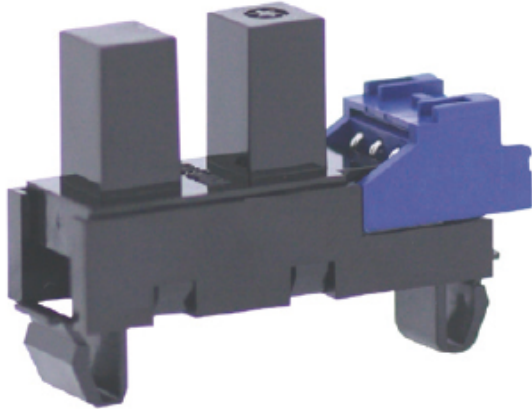


# KI1611

**Product code:** KI1611

**Manufacturer:** Shinkoh electronics



Model KI1610 consist of an Infra Red LED and a Photo IC(Digital Output).

Feature:

- Built-in amplifier, Open collector output type
- Visible light cut filter
- Built in resistor for LED drive

Application:

- Object passing for card reader, Bill exchanger.
- Coin-passing for Auto vending machine an Amusement.
- Object passing in Auto vender and Tiket vending machine.
- Paper detection for O.A equipment.

<b>Mounting</b>	Snap-in & Connector
<b>Output Mode</b>	Digital high level
<b>Series</b>	KI Series