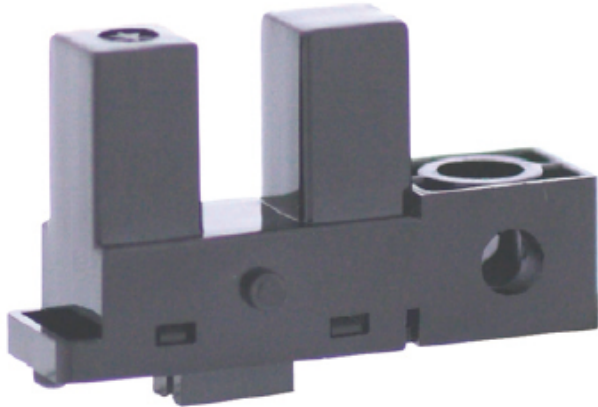


KI1601

Product code: KI1601

Manufacturer: Shinkoh electronics



Model KI1601 consist of an Infra Red LED and a Photo IC(Digital Output).

Feature:

- Built-in amplifier, Open collector output type
- Visible light cut filter
- Built in resistor for LED drive

Application:

- Object passing for card reader, Bill exchanger.
- Coin-passing for Auto vending machine an Amusement.
- Object passing in Auto vender and Tiket vending machine.
- Paper detection for O.A equipment.

Mounting

Connector

Output Mode

Digital low level

Series

KI Series