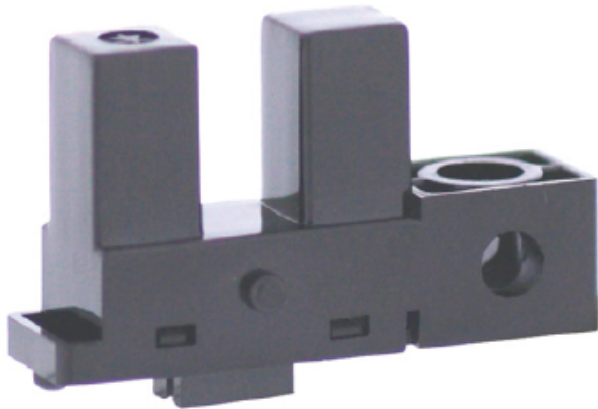


KI1600

Product code: KI1600

Manufacturer: Shinkoh electronics



Model KI1600 consist of an Infra Red LED and a Photo IC(Digital Output).

Feature:

- Built-in amplifier, Open collector output type
- Visible light cut filter
- Built in resistor for LED drive

Application:

- Object passing for card reader, Bill exchanger.
- Coin-passing for Auto vending machine an Amusement.
- Object passing in Auto vender and Tiket vending machine.
- Paper detection for O.A equipment.

| | |
|--------------------|--------------------|
| Dust Proof | Yes |
| Slot Width | 5 mm |
| Mounting | Connector |
| Output | Photo IC output |
| Output Mode | Digital high level |
| Series | KI Series |
| Output type | Open collector |