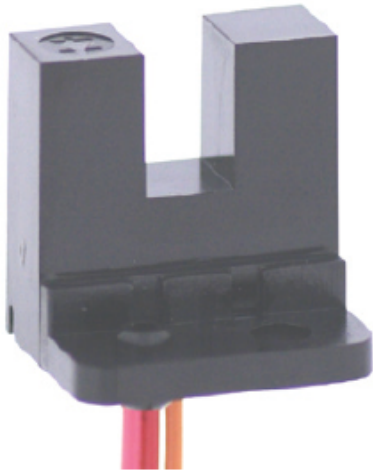


# KI1333

**Product code:** KI1333

**Manufacturer:** Shinkoh electronics



Model KI1333 consist of an Infra Red LED and a Photo IC(Digital Output). Other package has no aperture on the both light pass surface of the emitter an detector

Feature:

- Built-in amplifier, Open collector output type
- High resolution slit width 0,5mm.
- Visible light cut filter
- Built in resistor for LED drive

Application:

- Object passing for card reader, Bill exchanger.
- Coin-passing for Auto vending machine an Amusement.
- Object passing in Auto vender and Tiket vending machine.
- Paper detection for O.A equipment.

<b>Dust Proof</b>	Yes
<b>Slot Width</b>	5 mm
<b>Mounting</b>	Wire & Connector
<b>Output</b>	Photo IC output
<b>Output Mode</b>	Digital high level
<b>Series</b>	KI Series
<b>Output type</b>	Open collector