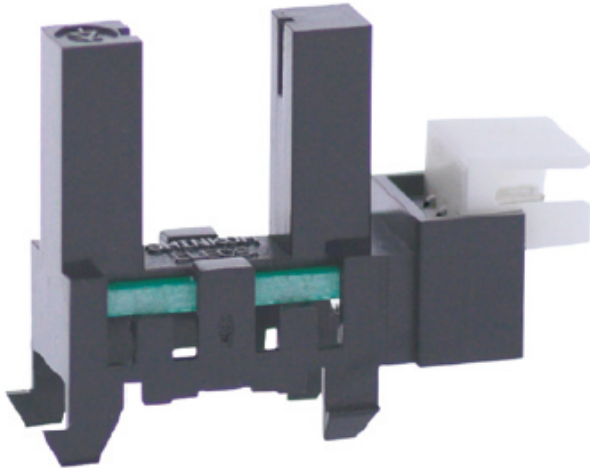


KI1309

Product code: KI1309

Manufacturer: Shinkoh electronics



Model KI1309 consist of an Infra Red LED and high sensitive photo transistor.

Feature:

- Wide slot width 8mm.
- Slot depth 12.2mm.

Application:

- Object passing for card reader, Bill exchanger.
- Coin-passing for Auto vending machine an Amusement.
- Object passing in Auto vender and Tiket vending machine.
- Paper detection for O.A equipment.

Slot Width	8 mm
Mounting	Snap-in & Connector
Output Mode	Digital low level
Series	KI Series
Output type	Open collector