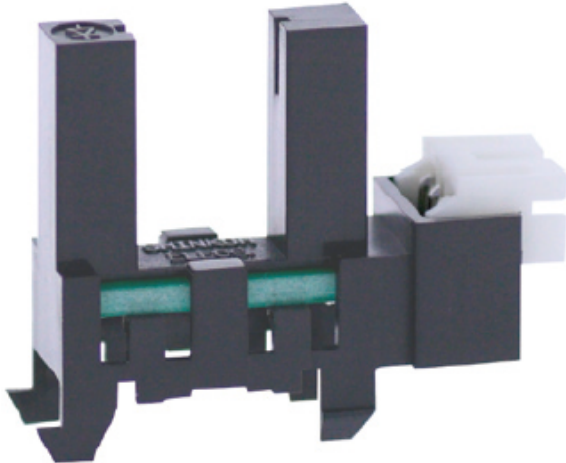


KI1306

Product code: KI1306

Manufacturer: Shinkoh electronics



Model KI1306 consist of an Infra Red LED and a Photo IC(Digital Output). Other package has no aperture on the both light pass surface of the emitter an detector

Feature:

- Built-in amplifier, Open collector output type
- High resolution slit width 0,8mm.
- Visible light cut filter
- Built in resistor for LED drive

Application:

- Object passing for card reader, Bill exchanger.
- Coin-passing for Auto vending machine an Amusement.
- Object passing in Auto vender and Tiket vending machine.
- Paper detection for O.A equipment.

Mounting

Snap-in & Connector

Series

KI Series