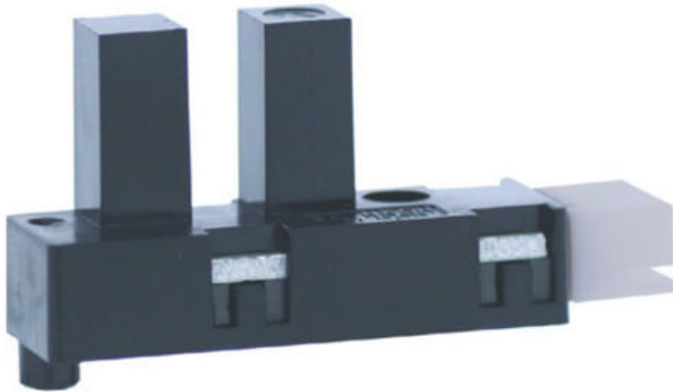


## KI1258

**Product code:** KI1258

**Manufacturer:** Shinkoh electronics



Model KI1258 consist of an Infra Red LED and a Photo IC(Digital Output). Other package has no aperture on the both light pass surface of the emitter an detector.

Feature:

- Easy removing paper dust.
- High resolution slit width 0,5mm.
- Visible light cut filter
- Built in resistor for LED drive

Application:

- Object passing for card reader, Bill exchanger.
- Coin-passing for Auto vending machine an Amusement.
- Object passing in Auto vender and Tiket vending machine.
- Paper detection for O.A equipment.

|                    |                   |
|--------------------|-------------------|
| <b>Dust Proof</b>  | Yes               |
| <b>Slot Width</b>  | 5 mm              |
| <b>Mounting</b>    | Connector         |
| <b>Output</b>      | Photo IC output   |
| <b>Output Mode</b> | Digital low level |
| <b>Series</b>      | KI Series         |
| <b>Output type</b> | Open collector    |