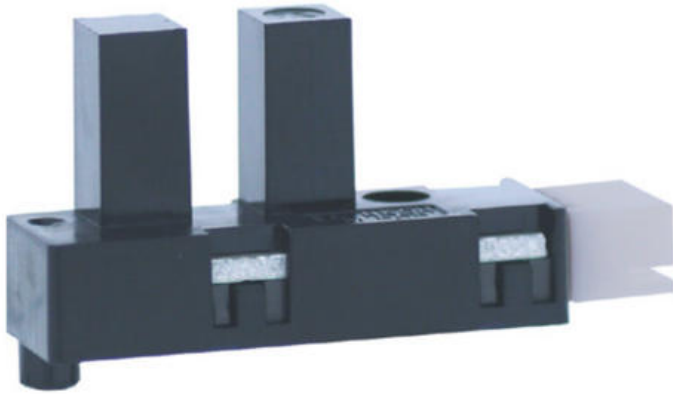


KI1257

Product code: KI1257

Manufacturer: Shinkoh electronics



Model KI1257 consist of an Infra Red LED and a Photo IC(Digital Output). Other package has no aperture on the both light pass surface of the emitter an detector.

Feature:

- Easy removing paper dust.
- High resolution slit width 0,5mm.
- Visible light cut filter
- Built in resistor for LED drive

Application:

- Object passing for card reader, Bill exchanger.
- Coin-passing for Auto vending machine an Amusement.
- Object passing in Auto vender and Tiket vending machine.
- Paper detection for O.A equipment.

Dust Proof	Yes
Slot Width	5 mm
Mounting	Connector
Output	Photo IC output
Output Mode	Digital high level
Series	KI Series
Output type	Open collector