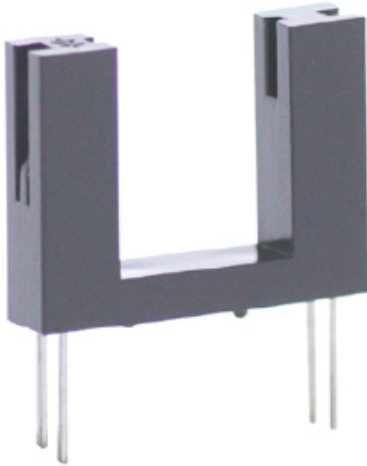


# KI1230

**Product code:** KI1230

**Manufacturer:** Shinkoh electronics



Model KI1230 consist of an Infra Red LED and a Photo IC.

Feature:

- Built-in amplifier, Pull-up Resistor output type.
- Slot depth-12mm.
- Wide Slot width-10mm.

Application:

- Object passing for Card reader, Bill exchanger.
- Coin-passing for Auto vending machine and Amusement.
- Paper detection for O.A.equipmen

<b>Dust Proof</b>	No
<b>Slot Width</b>	10 mm
<b>Mounting</b>	PCB
<b>Output</b>	Photo IC output
<b>Output Mode</b>	Digital low level
<b>Series</b>	KI Series
<b>Output type</b>	Pull-up