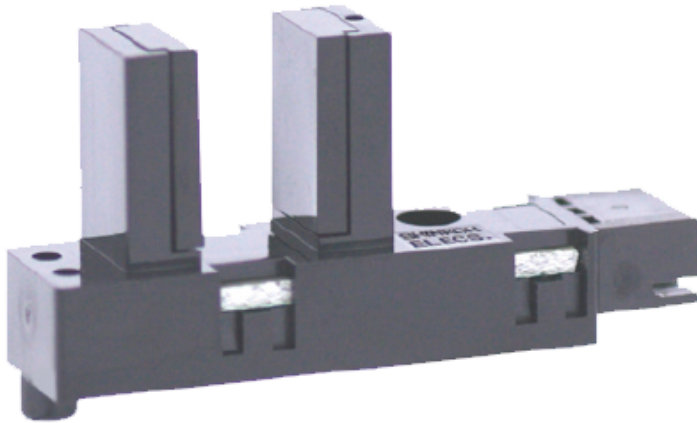


# KI659

**Product code:** KI659

**Manufacturer:** Shinkoh electronics



Model KI659/660/669/670 consist of an Infra Red LED and a High sensitive Photo IC(Digital Output).

Feature:

- Built-in amplifier
- Dust proof: Visible Light cut resin
- Wide Slot width-8mm, Slot depth-14mm

Application:

- Object passing for card reader, Bill exchanger.
- Coin-passing for Auto vending machine an Amusement.
- Paper detection for O.A equipment.

|                    |                    |
|--------------------|--------------------|
| <b>Dust Proof</b>  | Yes                |
| <b>Slot Width</b>  | 8 mm               |
| <b>Mounting</b>    | Connector          |
| <b>Output</b>      | Photo IC output    |
| <b>Output Mode</b> | Digital high level |
| <b>Series</b>      | KI Series          |
| <b>Output type</b> | Pull-up            |